

CORRECTION

Open Access



Correction: Whole-exome sequencing of *BRC*A-negative breast cancer patients and case–control analyses identify variants associated with breast cancer susceptibility

Ning Yuan Lee^{1†}, Melissa Hum^{1†}, Aseervatham Anusha Amali¹, Wei Kiat Lim¹, Matthew Wong¹, Matthew Khine Myint¹, Ru Jin Tay², Pei-Yi Ong³, Jens Samol^{4,5}, Chia Wei Lim⁶, Peter Ang⁷, Min-Han Tan², Soo-Chin Lee^{3,8,9} and Ann S. G. Lee^{1,10,11*}

Correction: Human Genomics (2022) 16:61
<https://doi.org/10.1186/s40246-022-00435-7>

Following publication of the original article [1], the authors reported Fig. 1 is not the updated version. The

correct Fig. 1 has been provided in this Correction. The original article [1] has been corrected.

The original article can be found online at <https://doi.org/10.1186/s40246-022-00435-7>.

[†]Ning Yuan Lee and Melissa Hum these authors contributed equally

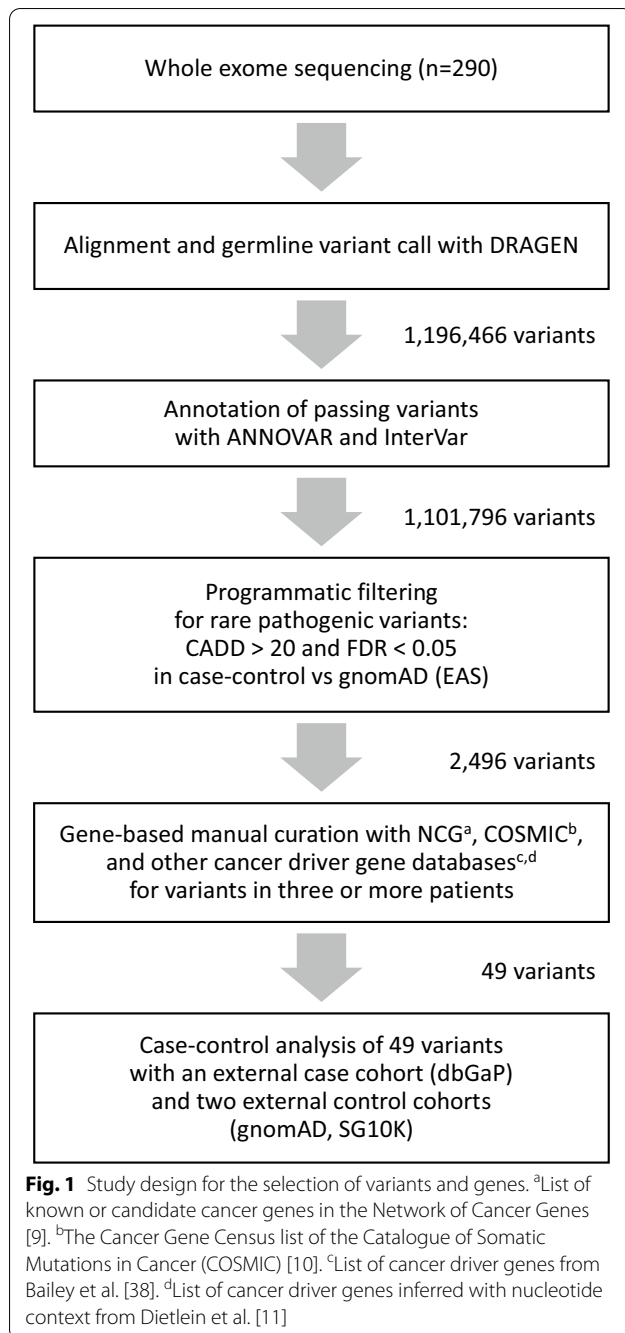
*Correspondence: gmslimsg@nus.edu.sg

¹ Division of Cellular and Molecular Research, Humphrey Oei Institute of Cancer Research, National Cancer Centre Singapore, 11 Hospital Crescent, Singapore 169610, Singapore

Full list of author information is available at the end of the article



© The Author(s) 2022. **Open Access** This article is licensed under a Creative Commons Attribution 4.0 International License, which permits use, sharing, adaptation, distribution and reproduction in any medium or format, as long as you give appropriate credit to the original author(s) and the source, provide a link to the Creative Commons licence, and indicate if changes were made. The images or other third party material in this article are included in the article's Creative Commons licence, unless indicated otherwise in a credit line to the material. If material is not included in the article's Creative Commons licence and your intended use is not permitted by statutory regulation or exceeds the permitted use, you will need to obtain permission directly from the copyright holder. To view a copy of this licence, visit <http://creativecommons.org/licenses/by/4.0/>. The Creative Commons Public Domain Dedication waiver (<http://creativecommons.org/publicdomain/zero/1.0/>) applies to the data made available in this article, unless otherwise stated in a credit line to the data.



Health System, 5 Lower Kent Ridge Road, Singapore 119074, Singapore. ⁴Medical Oncology Department, Tan Tock Seng Hospital, 11 Jalan Tan Tock Seng, Singapore 308433, Singapore. ⁵Johns Hopkins University, Baltimore, MD 21218, USA. ⁶Department of Personalised Medicine, Tan Tock Seng Hospital, 11 Jalan Tan Tock Seng, Singapore 308433, Singapore. ⁷Oncocare Cancer Centre, Gleneagles Medical Centre, 6 Napier Road, Singapore 258499, Singapore. ⁸Department of Medicine, Yong Loo Lin School of Medicine, National University of Singapore, 10 Medical Dr, Singapore 117597, Singapore. ⁹Cancer Science Institute, Singapore (CSI), National University of Singapore, 14 Medical Dr, Singapore 117599, Singapore. ¹⁰Department of Physiology, Yong Loo Lin School of Medicine, National University of Singapore, 2 Medical Drive, Singapore 117593, Singapore. ¹¹SingHealth Duke-NUS Oncology Academic Clinical Programme (ONCO ACP), Duke-NUS Graduate Medical School, 8 College Road, Singapore 169857, Singapore.

Published online: 19 December 2022

Reference

1. Lee NY, Hum M, Amali AA, et al. Whole-exome sequencing of BRCA-negative breast cancer patients and case-control analyses identify variants associated with breast cancer susceptibility. *Hum Genomics*. 2022;16:61. <https://doi.org/10.1186/s40246-022-00435-7>.

Publisher's Note

Springer Nature remains neutral with regard to jurisdictional claims in published maps and institutional affiliations.

Author details

¹Division of Cellular and Molecular Research, Humphrey Oei Institute of Cancer Research, National Cancer Centre Singapore, 11 Hospital Crescent, Singapore 169610, Singapore. ²Lucence Diagnostics Pte Ltd, 211 Henderson Road, Singapore 159552, Singapore. ³Department of Hematology-Oncology, National University Cancer Institute, Singapore (NCIS), National University